



Kleenex[®]
BRAND



Kleenex[®]
Facial Tissue
**Trusted for
over 90 years**

Cold & Flu Season

Every year, the U.S. has a seasonal flu epidemic and 2018 was memorable for high levels of flu activity and hospitalizations.¹ This Cold & Flu Season, stock up on Kleenex[®] Facial Tissue to help prevent germs from spreading. Leverage Kleenex[®], one of the world's most recognizable and respected brands.

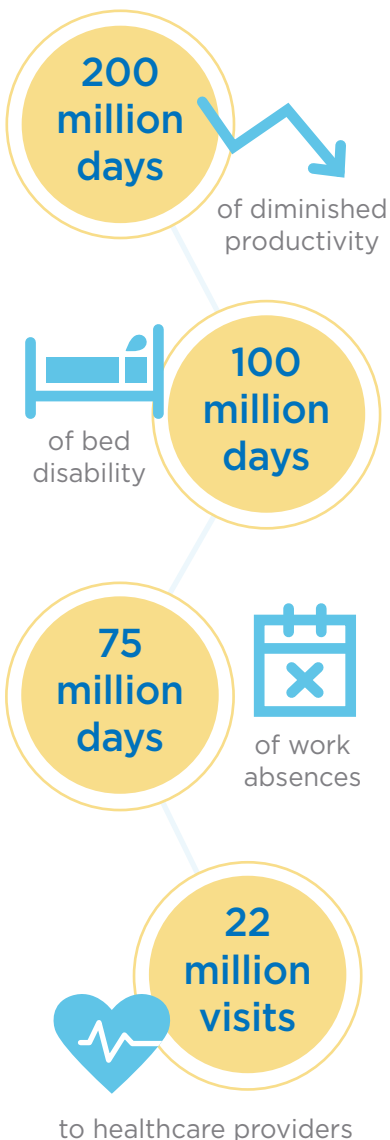
Ideal for:



The estimated average total economic burden of influenza to the U.S. healthcare system and society is **\$11.2 billion.²**



During Cold & Flu Season, adults 18-64 years old are most affected. Among that age group, each year the flu causes:



When is Cold & Flu Season?

Colds and flu can happen year-round, but there are highly active periods:



Where are germs most commonly found?

The average desk carries more than

20,000 GERMS



Work

Highly contaminated surfaces in schools

- Bathroom stall door handles
- Classroom desks
- Door handles



School

Hotel surfaces with **300+ ATP** in testing³ have a higher risk for illness transmission:

- Bathroom sink faucets **7,255**
- Elevator buttons **2,679**
- Door handles **2,093**
- Water fountains **1,976**



Hotels

What is the impact of Cold & Flu Season?

OVER 80% OF EMPLOYEES

miss work each year due to “minor illnesses” such as cold, flu and stomach illness

NEARLY 22 MILLION SCHOOL DAYS

are lost annually due to the common cold alone

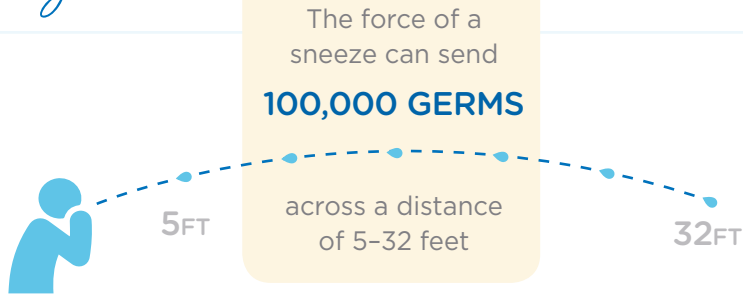
OVER 50% OF

GERM-ANXIOUS CONSUMERS

surveyed are worried about germs in hotels

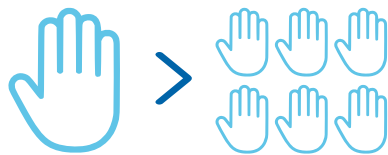
How is the cold or flu virus spread?

By Air



Plus, droplets that remain airborne can continue to travel through ventilation systems, ending up much farther away.

By Hand



A virus on 1 person's hand can transfer to up to 6 different people.

Fingers carrying a flu virus can contaminate up to

7

CLEAN SURFACES

How long can germs live?

up to
8-12
hours

On porous surfaces, such as clothing, paper and tissue

up to
48
hours

On nonporous surfaces, such as doorknobs, keyboards or desks

up to
6
days

For the severe strain of avian flu on some surfaces

Why Kleenex® Brand?

Kleenex® Anti-Viral^{††} Facial Tissue has a treated middle layer that kills **99.9%** of cold & flu viruses.



Hygienic

Hand hygiene is one of the most effective measures in reducing the spread of germs and preventing illness, according to the Centers for Disease Control and Prevention (CDC).

Kleenex® Anti-Viral^{††} Facial Tissue A patented, one-of-kind tissue **kills viruses within 15 minutes.**

Comforting

Help soothe sensitive areas by using **Kleenex® Lotion Facial Tissue.** Infused with pure aloe and vitamin E; it's America's Best Lotion Tissue.



Prepare for Every Season with Kleenex® – America's #1 Brand of Facial Tissue

Q1 COLD & FLU

Mainline, AV, Lotion

Q2 ALLERGY

Mainline, Lotion, Cool Touch®

Q3 BACK TO SCHOOL/BUSINESS

Mainline, AV, Lotion

Q4 COLD & FLU

Mainline, AV, Lotion

Solutions for Every Season

	Code	Season	Description	Available in Convenience Case	FSC	Color	Ply	Size (W x L)	Qty/Unit	Units/Case	Qty/Case
	21400	Q1, Q2, Q3, Q4	Kleenex® Facial Tissue	✓	✓	White	2	8.4" x 8.0" 21.3cm x 20.3cm	100 sts.	36 bxs.	3,600 sts.
	21270	Q1, Q2, Q3, Q4	Kleenex® Facial Tissue	✓	✓	White	2	8.4" x 8.0" 21.3cm x 20.3cm	95 sts.	36 bxs.	3,420 sts.
	21286	Q1, Q3, Q4	Kleenex® Anti-Viral ¹ Facial Tissue	✓	✓	White	3	8.2" x 8.2" 20.8cm x 20.8cm	68 sts.	12 bxs. 4 bundles	816 sts.
	25829	Q1, Q2, Q3, Q4	Kleenex® Lotion Facial Tissue		✓	White	3	8.4" x 8.2" 21.3cm x 20.8cm	75 sts.	27 bxs.	2,025 sts.
	29388	Q2	Kleenex® Cool Touch® Facial Tissue		✓	White	3	8.4" x 8.2" 21.3cm x 20.8cm	50 sts.	27 bxs.	1,350 sts.

Complete All Bundles with Kleenex® Facial Tissue

Kleenex® & Cottonelle® Solutions

Unrivaled Experience

39640
51904
 Pair with
46321 ✓

17713 ✓ ✓

45826 ✓ ✓

21270 ✓

Other Solutions to Consider

Scott® Pro™ Solutions
State-of-the-art solutions to maximize productivity

Scott® Control™ Solutions
Designed for hygiene-critical environments

Scott® Essential™ Solutions
A reliable balance of efficiency, performance and value



For more information, visit www.KCProfessional.com

Kimberly-Clark warrants that its products (1) comply with K-C's standard specifications as of the delivery date to K-C's authorized distributors/direct purchasers (2) comply with all K-C labeling representations; and (3) are manufactured in compliance with all applicable federal, state, and local laws in effect at the time and place of manufacture of the products. THIS WARRANTY IS IN LIEU OF ALL OTHER WARRANTIES, EXPRESS OR IMPLIED, INCLUDING ANY WARRANTY OF MERCHANTABILITY OR FITNESS FOR A PARTICULAR PURPOSE. K-C is not liable for any kind of special, incidental, or consequential damages. K-C's liability for breach of contract, tort or other cause of action shall not exceed the product purchase price. Purchasers and users are deemed to have accepted the above warranty and limitation of liability, and cannot change the terms by verbal agreement or by any writing not signed by K-C. To the extent required by applicable law, K-C does not limit its liability for death/injury resulting from K-C's negligence.

¹ "Frequently Asked Flu Questions 2017-2018 Influenza Season." Centers for Disease Control and Prevention. March 30, 2018. Accessed May 15, 2018. <https://www.cdc.gov/flu/about/season/flu-season-2017-2018.htm>

² "Economic Burden of Seasonal Influenza in the United States." Vaccine 36, no. 27 (June 22, 2018): 3960-3966. Abstract accessed July 17, 2018. <https://www.ncbi.nlm.nih.gov/pubmed/29801988>

³ ATP testing measures levels of Adenosine Triphosphate (ATP) to determine the cleanliness of surfaces

¹¹ In the tissue within 15 minutes. Virucidal against: Rhinoviruses Type 1A and 2 (rhinoviruses are the leading cause of the common cold), Influenza A and Influenza B (causes of the flu), Respiratory Syncytial Virus (RSV), the leading cause of lower respiratory infection in children).

⁹⁷™ Trademarks of Kimberly-Clark Worldwide, Inc. or its affiliates. Marques de commerce de Kimberly-Clark Worldwide, Inc. ou de ses sociétés affiliées © KCWW. T8BK87 9/18

✓ Meets EPA guidelines for minimum post-consumer waste content: towels 40%, bathroom tissue 20%, facial tissue 10%

✓ NSF® Certified



PRODUCT CERTIFIED FOR REDUCED ENVIRONMENTAL IMPACT. VIEW SPECIFIC ATTRIBUTES EVALUATED: UL COM/EL UL 175 or UL 2783

