



1 Duro Way  
Walton, KY 41094

CREATED BY: B. Wallrawe

TECHNICAL:

Finished Web 34.75"

DESIGN GROUP:  
Hudson Series

D Bag Die Cut  
11 x 6 x 11 1/16

DATE: 11/14/05

SCALE: FULL

This .020" Microdot Is For Flexographic Printing Only. It Should Be Placed On Every Color At The Center Of Largest Copy (Top To Bottom). The Left Microdot Gets Placed 1/64" Inside The Paste Area. The Right Microdot Gets Placed 1/64" Outside The Right Side Back Fold Edge Line.

**BORDER DESIGNS**  
Because Of Machine Movement In Bag Conversion, Copy Should Be Placed At Least 1/4" From Fold Lines Or Edges. In The Top Area, Use 1/2" Bleed. Border Designs Should Be Kept 1/2" From Fold Edges, Top Cutoff And Bottom Fold.

PLEASE NOTE: All Screen, Half-Tones And Process Jobs Must Be Reviewed By Duro's Graphic Printing Division Before Preparing Art.

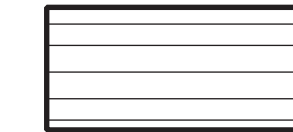
**This Proof is For Copy, Elements And Position Only. NOT FOR COLOR APPROVAL.**

Fill All 5 Anti-Bounce Area With 40% Screen In All Colors Containing Screens

Full Panel Print Must Bleed Into Top & Bottom Panel Of Bag, Which Is Indicated On Template



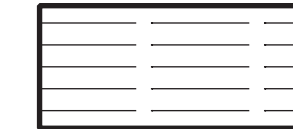
No Copy Areas



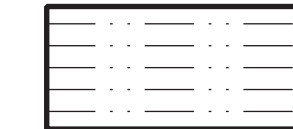
Fold And Paste Lines



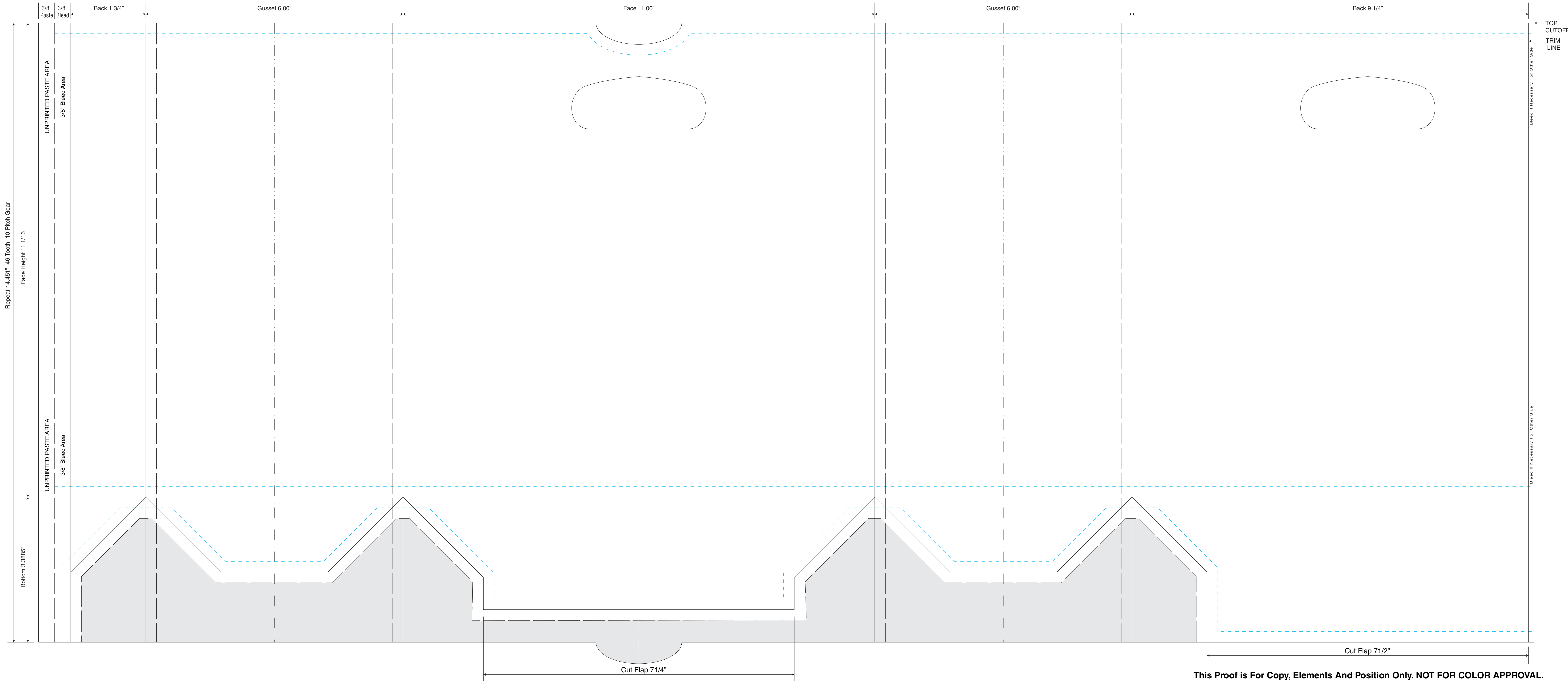
No Art Or Copy Past These Lines



Bleed Lines



Center Lines



This Proof is For Copy, Elements And Position Only. NOT FOR COLOR APPROVAL.